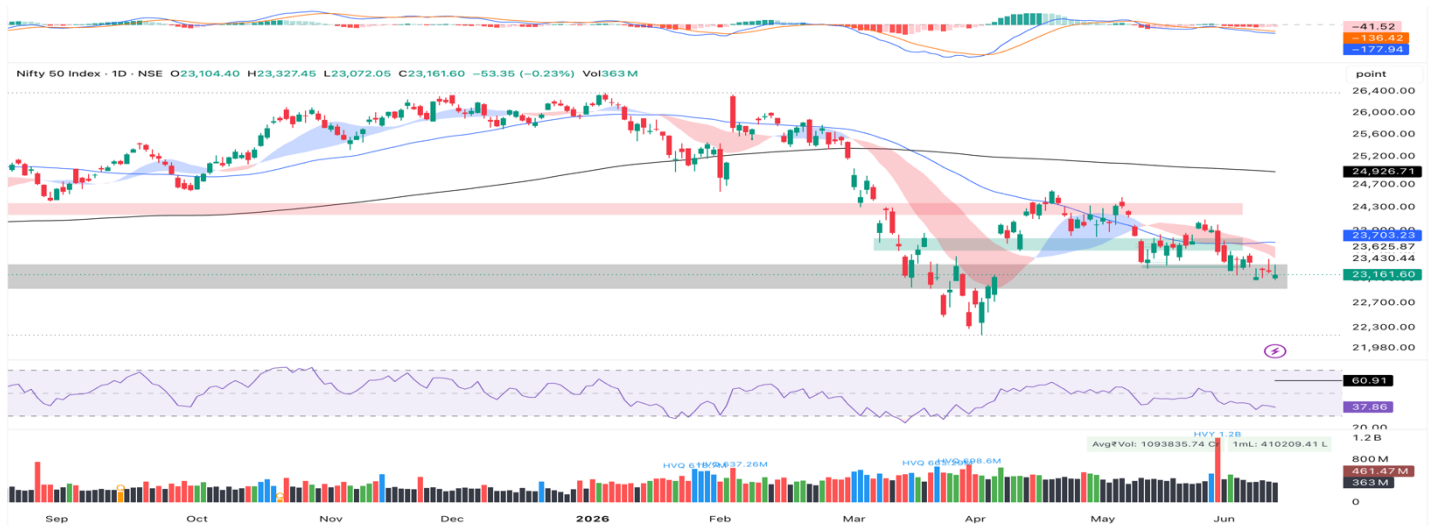


NIFTY SPOT : IMMEDIATE SUPPORT AT 23050-22920



Source – TradingView, BP Equities Research

Nifty 50 closed at 23,162, declining 53 points in a session where the index gapped down, tested the demand zone, recovered to a high of 23,327 before closing with a green body with an upper shadow, confirming the demand zone is holding but overhead supply remains active between 23,300 and 23,430. GIFT Nifty implies a substantial gap-up, which would open the index directly at the cloud. A sustained close above the cloud at 23,430 would be the first cloud re-entry since the breakdown and a meaningful structural shift. A rejection from this level would confirm the cloud as impenetrable overhead supply. RSI at 37.86 is the most oversold reading of the entire corrective phase. Mean-reversion bounce potential from current levels is at its highest. MACD histogram continues improving with the bearish momentum decelerating for the fifth consecutive session while the volume remained below average. The lower cloud at 23,430 and 23,580 are the sequential resistance levels today.

Intraday Nifty

Resistance – 23430-23580-23700

Support – 23050-22920-22780

BANKNIFTY SPOT : IMMEDIATE SUPPORT 55000-54500



Source – TradingView, BP Equities Research

Bank Nifty closed at 55,177, gaining 76 points in a session marked by the single most important technical development. The MACD line has crossed above the zero line, confirming a bullish MACD zero-line crossover for the first time since the correction began. This milestone, combined with a MACD histogram expanding, RSI at 55.24 maintaining a third consecutive above-50 session, and the cloud and 50 DMA reclaim intact, constitutes the most comprehensive technical positive in this cycle. The candle printed a large green body but also a significant upper shadow rejecting at 55,600. The 55,500 to 55,600 zone is an active supply that must be cleared for the next upleg. A gap-up opening consistent with GIFT Nifty cues would bring BankNifty to approximately 55,700 to 55,800. A closing break above 56,000 on volume would be a very significant medium-term breakout. Support is placed at 55,000 and at the 50 DMA and cloud at 54,500.

Intraday Banknifty

Resistance –56000-56500-57000

Support –55000-54500-54000

INTRADAY TRADER'S PICK

SR NO.	STOCK	ENTRY	TARGET 1	TARGET 2	STOP LOSS	RECOMMENDATION
1	ABDL	608	614	620	602	BUY
2	DIFFNKG	362	366	370	358	BUY
3	JINDALPOLY	732	739	746	725	BUY
4	CCL	1133	1122	1111	1144	SELL
5	SAPPHIRE	167	165	163	169	SELL

MWPL

SCRIPS	Future Equivalent OI %	BAN
KAYNES	90%	YES
AMBER	86%	NO
SAIL	86%	NO
GLENMARK	82%	NO
AMBUJACEM	82%	NO
BANDHANBNK	81%	NO
KALYANKJIL	74%	NO
WIPRO	73%	NO
NBCC	73%	NO
NMDC	72%	NO

DERIVATIVES

SCRIPS	CP AS ON 10/06/2026	CP AS ON 11/06/2026	CHA NGE (%)	OI AS ON 10/06/2026	OI AS ON 11/06/2026	CHA NGE (%)
BANKNIFTY	55200.4	55272	0.13	2627430	2629350	0.07
FINNIFTY	25215.7	25178.8	-0.15	36300	35940	-0.99
MIDCPNIFTY	14029.4	13924.35	-0.75	2418120	2481600	2.63
NIFTY	23240.1	23200	-0.17	21358870	21075015	-1.33
NIFTYNXT50	69315.4	68780.6	-0.77	21175	22900	8.15

DERIVATIVES HIGHLIGHTS

- Nifty Future closed with a Premium of 66 points v/s Premium of 21 points in the previous session.
- Nifty Future Open Interest Decreased by 1.33%. Bank Nifty Future Open Interest Increased by 0.07%
- Nifty PCR – OI Increased from 0.82 to 0.92; Nifty Bank PCR – OI Decreased from 0.98 to 0.97
- FII Sold Rs. 1,987.09 crore, and DII Bought Rs. 4,224.51 crore in the Cash Segment. FII Bought Rs. 780.55 crore in Index Futures and Sold Rs. 2,008.38 crore in Index Options, while in Stock Futures, they Sold Rs. 939.22 crore and Sold Rs. 448.17 crore in Stock Options.
- Among the Index Option space, the Highest Open Interest Concentration was seen in the 21200 & 22000 Strike prices among the PE options. Whereas among CE Options, the Highest Open Interest Concentration was seen in 24000 & 23500 Strike price.
- The Highest Open Interest buildup among the PE options was seen in the 22300 & 23100 Strike prices. Among CE options, the highest build-up was seen in the 23600 & 23200 Strike prices.

HIGHEST OI CONCENTRATION

PUT OPTION		CALL OPTION	
STRIKE PRICE	OPEN INT.	STRIKE PRICE	OPEN INT.
21200	8710455	24000	9163440
22000	8142485	23500	7220005
23000	7037355	24500	7057050
22500	7004790	23200	6435325
23200	5940415	23600	6412185

HIGHEST CHANGE IN OI

PUT OPTION		CALL OPTION	
STRIKE PRICE	CHANGE IN OI	STRIKE PRICE	CHANGE IN OI
22300	3289910	23600	2973490
23100	2612935	23200	2733510
23000	2403960	23700	2571855
23150	1835600	24000	1806155
22900	1516580	23150	1146990

STOCK ANALYSIS

LONG BUILD UP	LONG UNWINDING	SHORT BUILD UP	SHORT COVERING
APLAPOLLO	BANDHANBNK	ADANIENSOL	360ONE
DRREDDY	BPCL	ADANIPOWER	CIPLA
HYUNDAI	FORCEMOT	AMBER	DELHIVERY
KPITTECH	HCLTECH	ANGELONE	ICICIBANK
MARUTI	HDFCLIFE	ASHOKLEY	IDEA

STATISTICS

HIGHEST PREMIUM

SCRIPS	PREMIUM %	PRICE CHANGE %
SAIL	0.66	-0.20
NMDC	0.58	0.02
HAVELLS	0.57	-2.29
BANKINDIA	0.57	-2.40
IDEA	0.56	2.09

HIGHEST DISCOUNT

SCRIPS	PREMIUM %	PRICE CHANGE %
KAYNES	-3.95	-1.50
IREDA	-2.15	-1.89
TATASTEEL	-1.55	-0.67
HDFCBANK	-1.24	-0.30
LICI	-1.08	-0.69

TOP 5 VOLUME GAINER FOR THE SESSION

SCRIPS	CP AS ON 10/06/2026	CP AS ON 11/06/2026	CHANGE (%)	VOL AS ON 10/06/2026	VOL AS ON 11/06/2026	CHANGE (%)
AMBER	7695.5	7318.5	-4.90	388	5501	1317.78
OFSS	9509.5	9317	-2.02	1889	5205	175.54
TECHM	1483.4	1466	-1.17	1820	4153	128.19
TORNTPHARM	4470.9	4577	2.37	3029	6308	108.25
PERSISTENT	4941	4860.5	-1.63	3897	7853	101.51

TOP 5 VOLUME LOSER FOR THE SESSION

SCRIPS	CP AS ON 10/06/2026	CP AS ON 11/06/2026	CHA NGE (%)	VOL AS ON 10/06/2026	VOL AS ON 11/06/2026	CHA NGE (%)
PIDILITIND	1514.6	1504.8	-0.65	4500	909	-79.80
GLENMARK	2155.6	2155.8	0.01	5110	1266	-75.23
PHOENIXLTD	1769.8	1740.5	-1.66	1845	534	-71.06
HINDUNILVR	2156	2128.3	-1.28	8792	2828	-67.83
COLPAL	2061.4	2031.4	-1.46	4742	1601	-66.24

TOP 10 OPEN INTEREST GAINER FOR THE SESSION

SCRIPS	CP AS ON 10/06/2026	CP AS ON 11/06/2026	CHA NGE (%)	OI AS ON 10/06/2026	OI AS ON 11/06/2026	CHA NGE (%)
COCHINSHIP	1398.2	1383.2	-1.07	3771600	4117200	9.16
MAXHEALTH	1010.95	1014.7	0.37	10764075	11655000	8.28
AMBER	7695.5	7318.5	-4.90	2443200	2644400	8.24
NIFTYNXT50	69315.4	68780.6	-0.77	21175	22900	8.15
NUVAMA	1522.3	1504.1	-1.20	1467000	1576000	7.43
MANAPPURAM	289.6	293.35	1.29	48219000	51306000	6.40
RADICO	3483.9	3457.6	-0.75	160500	168600	5.05
HINDALCO	1043	1029.2	-1.32	34252400	35974400	5.03
HYUNDAI	1895	1950.1	2.91	7590275	7952725	4.78
CAMS	741.55	725.65	-2.14	6312225	6607350	4.68

TOP 10 OPEN INTEREST LOSER FOR THE SESSION

SCRIPS	CP AS ON 10/06/2026	CP AS ON 11/06/2026	CHA NGE (%)	OI AS ON 10/06/2026	OI AS ON 11/06/2026	CHA NGE (%)
ICICIBANK	1296.6	1319.2	1.74	157721200	148109500	-6.09
BPCL	288.65	286.9	-0.61	50105750	48312450	-3.58
KALYANKJIL	339.2	331.55	-2.26	42815325	41374500	-3.37
HDFCLIFE	548.2	544.05	-0.76	51126900	49599000	-2.99
NHPC	72.95	72.5	-0.62	156281250	152074200	-2.69
TORNTPHARM	4470.9	4577	2.37	3039750	2959625	-2.64
OIL	429.35	430.85	0.35	18870600	18501000	-1.96
PNBHOUSING	969.6	958.4	-1.16	10322000	10125050	-1.91
MCX	2750.1	2791	1.49	11608925	11403050	-1.77
SBIN	1005.2	1004.25	-0.09	90525750	88929000	-1.76

PIVOT REPORT NIFTY F&O

SYMBOL	LTP	PIVOT	SUP3	SUP2	SUP1	RES1	RES2	RES3
360 ONE WAM LIMITED	1064.1	1055.7	999.3	1015.3	1039.7	1080.1	1096.1	1120.5
ABB INDIA LIMITED	6719.0	6729.2	6480.3	6566.7	6642.8	6805.3	6891.7	6967.8
ADITYA BIRLA CAPITAL LTD.	336.6	338.4	324.2	329.5	333.1	341.9	347.2	350.8
ADANI ENERGY SOLUTION LTD	1466.7	1489.7	1357.1	1409.0	1437.8	1518.5	1570.4	1599.2
ADANI ENTERPRISES LIMITED	2908.8	2923.6	2808.6	2851.9	2880.3	2952.0	2995.3	3023.7
ADANI GREEN ENERGY LTD	1454.5	1466.5	1394.1	1422.2	1438.4	1482.7	1510.8	1527.0
ADANI PORT & SEZ LTD	1787.1	1796.4	1733.7	1757.7	1772.4	1811.1	1835.1	1849.8
ADANI POWER LTD	215.5	217.6	205.2	210.0	212.8	220.3	225.1	227.8
ALKEM LABORATORIES LTD.	5301.5	5299.3	5191.7	5226.8	5264.2	5336.7	5371.8	5409.2
AMBER ENTERPRISES (I) LTD	7290.0	7374.2	6854.3	7055.7	7172.8	7491.3	7692.7	7809.8
AMBUJA CEMENTS LTD	406.1	407.0	398.5	401.7	403.9	409.2	412.4	414.6
ANGEL ONE LIMITED	323.8	326.8	305.5	313.6	318.7	331.9	340.0	345.1
APL APOLLO TUBES LTD	1764.1	1761.4	1713.6	1728.6	1746.4	1779.2	1794.2	1812.0
APOLLO HOSPITALS ENTER. L	8493.0	8483.0	8329.0	8377.0	8435.0	8541.0	8589.0	8647.0
ASHOK LEYLAND LTD	138.6	139.2	134.6	136.3	137.4	140.3	142.0	143.2
ASIAN PAINTS LIMITED	2690.9	2689.5	2636.7	2653.8	2672.4	2708.1	2725.2	2743.8
ASTRAL LIMITED	1490.2	1497.3	1447.6	1466.5	1478.4	1509.2	1528.1	1540.0
AU SMALL FINANCE BANK LTD	963.3	961.0	924.4	935.8	949.6	974.7	986.1	999.9
AUROBINDO PHARMA LTD	1464.1	1465.0	1439.6	1448.4	1456.2	1472.8	1481.6	1489.4
AXIS BANK LIMITED	1317.3	1321.4	1271.0	1289.2	1303.2	1335.4	1353.6	1367.6
BAJAJ AUTO LIMITED	10114.0	10150.0	9871.0	9976.0	10045.0	10219.0	10324.0	10393.0
BAJAJ FINSERV LTD.	1645.1	1648.1	1619.4	1630.0	1637.5	1655.6	1666.2	1673.7
BAJAJ HOLDINGS & INVS LTD	9863.0	9911.3	9630.7	9740.3	9801.7	9972.7	10082.3	10143.7
BAJAJ FINANCE LIMITED	870.6	875.3	845.3	856.9	863.7	882.2	893.8	900.6
BANDHAN BANK LIMITED	193.9	196.4	182.9	188.2	191.0	199.2	204.6	207.4
BANK OF BARODA	267.6	266.1	257.1	259.6	263.6	270.1	272.6	276.6
BANK OF INDIA	141.4	142.0	135.4	137.8	139.6	143.8	146.2	148.0
BHARAT DYNAMICS LIMITED	1160.3	1166.4	1120.7	1138.0	1149.1	1177.5	1194.8	1205.9
BHARAT ELECTRONICS LTD	402.3	403.8	394.7	398.2	400.3	405.9	409.4	411.5
BHARAT FORGE LTD	1942.9	1945.6	1889.9	1909.4	1926.1	1962.3	1981.8	1998.5
BHARTI AIRTEL LIMITED	1782.6	1782.4	1741.4	1755.0	1768.8	1796.2	1809.8	1823.6
BHEL	370.7	372.6	353.8	360.7	365.7	377.6	384.5	389.5
BIOCON LIMITED.	416.0	416.0	404.5	408.3	412.1	419.8	423.6	427.4
BLUE STAR LIMITED	1556.8	1561.7	1521.4	1536.5	1546.6	1571.8	1586.9	1597.0
BOSCH LIMITED	37565.0	37795.0	36360.0	36915.0	37240.0	38120.0	38675.0	39000.0
BHARAT PETROLEUM CORP LT	286.4	284.7	274.8	277.5	281.9	289.1	291.8	296.2
BRITANNIA INDUSTRIES LTD	5113.0	5133.3	4982.2	5039.3	5076.2	5170.2	5227.3	5264.2
BSE LIMITED	3888.3	3902.5	3761.7	3813.4	3850.8	3939.9	3991.6	4029.0
COMPUTER AGE MNGT SER LTD	722.7	726.9	697.6	708.8	715.7	733.8	745.0	751.9
CANARA BANK	131.5	132.0	127.0	128.8	130.2	133.3	135.2	136.5
CENTRAL DEPO SER (I) LTD	1190.2	1190.2	1168.5	1175.7	1183.0	1197.5	1204.7	1212.0
CG POWER AND IND SOL LTD	901.4	908.9	863.8	881.4	891.4	918.9	936.5	946.5

PIVOT REPORT NIFTY F&O

SYMBOL	LTP	PIVOT	SUP3	SUP2	SUP1	RES1	RES2	RES3
CHOLAMANDALAM IN & FIN CO	1454.9	1459.2	1421.0	1435.2	1445.0	1469.0	1483.2	1493.0
CIPLA LTD	1383.3	1382.7	1357.4	1365.6	1374.5	1391.6	1399.8	1408.7
COAL INDIA LTD	446.2	447.8	436.6	440.8	443.5	450.5	454.7	457.4
COCHIN SHIPYARD LIMITED	1387.8	1385.3	1338.7	1353.4	1370.6	1402.5	1417.2	1434.4
COFORGE LIMITED	1393.8	1386.4	1310.6	1333.4	1363.6	1416.6	1439.4	1469.6
COLGATE PALMOLIVE LTD.	2028.6	2038.6	1970.0	1996.2	2012.4	2054.8	2081.0	2097.2
CONTAINER CORP OF IND LTD	440.3	440.5	430.7	434.1	437.2	443.6	447.0	450.1
CROMPT GREA CON ELEC LTD	253.0	254.0	245.4	248.6	250.8	256.2	259.4	261.6
CUMMINS INDIA LTD	5557.0	5602.5	5327.0	5434.0	5495.5	5664.0	5771.0	5832.5
DABUR INDIA LTD	421.7	424.0	407.3	413.6	417.7	428.1	434.4	438.5
DALMIA BHARAT LIMITED	1610.2	1616.0	1571.3	1588.1	1599.2	1627.1	1643.9	1655.0
DELHIVERY LIMITED	432.3	432.4	419.3	423.7	428.0	436.6	441.0	445.3
DIVI S LABORATORIES LTD	6655.5	6666.8	6518.7	6571.8	6613.7	6708.7	6761.8	6803.7
DIXON TECHNO (INDIA) LTD	11371.0	11397.0	11009.0	11147.0	11259.0	11509.0	11647.0	11759.0
DLF LIMITED	563.0	561.4	546.8	551.1	557.1	567.4	571.7	577.7
AVENUE SUPERMARTS LIMITED	3987.0	4017.0	3831.0	3903.0	3945.0	4059.0	4131.0	4173.0
DR. REDDY S LABORATORIES	1276.0	1276.0	1247.1	1256.7	1266.4	1285.7	1295.3	1305.0
EICHER MOTORS LTD	7179.5	7161.5	6947.0	7012.5	7096.0	7245.0	7310.5	7394.0
ETERNAL LIMITED	235.2	235.9	229.5	231.9	233.5	237.6	240.0	241.6
EXIDE INDUSTRIES LTD	385.7	384.6	374.0	377.2	381.4	388.9	392.1	396.3
FEDERAL BANK LTD	309.8	309.5	302.7	304.9	307.3	312.0	314.2	316.6
FORCE MOTORS LIMITED	17094.0	17080.7	16565.3	16732.7	16913.3	17261.3	17428.7	17609.3
FORTIS HEALTHCARE LTD	989.0	988.4	957.7	967.7	978.4	999.1	1009.1	1019.8
GAIL (INDIA) LTD	166.1	166.3	161.9	163.4	164.8	167.7	169.2	170.6
GLENMARK PHARMACEUTICALS	2144.5	2151.7	2103.3	2121.8	2133.2	2163.1	2181.6	2193.0
GMR AIRPORTS LIMITED	100.1	100.1	97.0	98.0	99.1	101.2	102.3	103.3
GODFREY PHILLIPS INDIA LT	2193.2	2204.6	2123.0	2154.0	2173.6	2224.2	2255.2	2274.8
GODREJ CONSUMER PRODUCTS	1008.9	1014.2	978.3	992.0	1000.5	1022.7	1036.4	1044.9
GODREJ PROPERTIES LTD	1618.0	1622.4	1576.8	1593.5	1605.7	1634.6	1651.3	1663.5
GRASIM INDUSTRIES LTD	3089.5	3081.4	2990.7	3018.2	3053.9	3117.1	3144.6	3180.3
GE VERNOVA T&D INDIA LTD	4735.0	4775.0	4500.0	4605.0	4670.0	4840.0	4945.0	5010.0
HINDUSTAN AERONAUTICS LTD	4172.3	4185.2	4083.7	4121.8	4147.1	4210.5	4248.6	4273.9
HAVELLS INDIA LIMITED	1129.0	1136.2	1089.6	1107.5	1118.3	1147.0	1164.9	1175.7
HCL TECHNOLOGIES LTD	1110.2	1104.6	1070.6	1080.1	1095.1	1119.6	1129.1	1144.1
HDFC AMC LIMITED	2389.8	2408.0	2300.2	2342.2	2366.0	2431.8	2473.8	2497.6
HDFC BANK LTD	744.6	746.9	721.9	731.0	737.8	753.7	762.8	769.6
HDFC LIFE INS CO LTD	545.3	546.2	534.6	538.8	542.0	549.5	553.7	556.9
HERO MOTOCORP LIMITED	4836.2	4840.5	4741.1	4775.7	4805.9	4870.7	4905.3	4935.5
HINDALCO INDUSTRIES LTD	1024.3	1028.6	1002.7	1012.8	1018.5	1034.3	1044.4	1050.1
HINDUSTAN PETROLEUM CORP	365.7	366.4	349.3	355.2	360.5	371.6	377.5	382.8
HINDUSTAN UNILEVER LTD.	2139.8	2146.7	2098.7	2117.0	2128.4	2158.1	2176.4	2187.8
HINDUSTAN ZINC LIMITED	545.0	544.6	514.9	524.7	534.8	554.8	564.6	574.7

PIVOT REPORT NIFTY F&O

SYMBOL	LTP	PIVOT	SUP3	SUP2	SUP1	RES1	RES2	RES3
HYUNDAI MOTOR INDIA LTD	1940.1	1918.0	1797.1	1830.0	1885.1	1973.1	2006.0	2061.1
ICICI BANK LTD.	1317.0	1312.2	1244.8	1265.7	1291.3	1337.8	1358.7	1384.3
ICICI LOMBARD GIC LIMITED	1712.4	1718.6	1673.4	1690.5	1701.5	1729.6	1746.7	1757.7
ICICI PRU LIFE INS CO LTD	460.4	462.1	451.0	455.2	457.8	464.7	468.9	471.5
VODAFONE IDEA LIMITED	14.2	14.1	13.0	13.4	13.8	14.5	14.9	15.3
IDFC FIRST BANK LIMITED	73.0	72.9	70.9	71.6	72.3	73.6	74.2	74.9
INDIAN ENERGY EXC LTD	117.1	117.6	114.1	115.4	116.3	118.4	119.8	120.6
THE INDIAN HOTELS CO. LTD	655.7	658.5	639.7	646.9	651.3	662.9	670.1	674.5
INDIAN BANK	825.7	825.5	801.7	809.6	817.6	833.6	841.5	849.5
INTERGLOBE AVIATION LTD	4502.4	4507.5	4384.9	4427.5	4464.9	4544.9	4587.5	4624.9
INDUSIND BANK LIMITED	889.0	889.4	865.4	873.6	881.3	897.1	905.3	913.0
INDUS TOWERS LIMITED	413.0	413.9	400.2	405.0	409.0	417.9	422.7	426.7
INFOSYS LIMITED	1114.6	1119.1	1079.8	1094.4	1104.5	1129.2	1143.8	1153.9
INOX WIND LIMITED	81.1	81.7	77.8	79.3	80.2	82.6	84.0	84.9
INDIAN OIL CORP LTD	134.2	134.5	131.2	132.4	133.3	135.4	136.6	137.5
INDIAN RENEWABLE ENERGY	118.3	118.5	115.9	116.8	117.6	119.2	120.1	120.9
INDIAN RAILWAY FIN CORP L	93.3	93.4	90.9	91.8	92.6	94.2	95.1	95.8
ITC LTD	282.4	282.3	279.3	280.2	281.3	283.4	284.3	285.4
JINDAL STEEL LIMITED	1121.3	1122.7	1080.3	1094.9	1108.1	1135.9	1150.5	1163.7
JIO FIN SERVICES LTD	228.0	228.3	223.8	225.4	226.7	229.6	231.2	232.5
JSW ENERGY LIMITED	552.3	556.4	523.8	536.1	544.2	564.5	576.8	584.9
JSW STEEL LIMITED	1282.3	1278.9	1232.0	1246.5	1264.4	1296.8	1311.3	1329.2
JUBILANT FOODWORKS LTD	413.6	416.2	398.9	405.5	409.6	420.3	426.9	431.0
KALYAN JEWELLERS IND LTD	330.8	332.0	314.9	321.0	325.9	336.9	343.0	347.9
KAYNES TECHNOLOGY IND LTD	3026.9	3051.5	2902.0	2960.0	2993.5	3085.0	3143.0	3176.5
KEI INDUSTRIES LTD.	5181.5	5178.2	5004.3	5061.2	5121.3	5238.3	5295.2	5355.3
KFIN TECHNOLOGIES LIMITED	805.6	806.9	783.9	792.0	798.8	813.7	821.8	828.6
KOTAK MAHINDRA BANK LTD	393.4	392.6	370.0	377.3	385.3	400.7	408.0	416.0
KPIT TECHNOLOGIES LIMITED	736.9	732.5	698.3	708.3	722.6	746.8	756.8	771.1
LAURUS LABS LIMITED	1390.8	1392.1	1343.0	1359.8	1375.3	1407.6	1424.4	1439.9
LIC HOUSING FINANCE LTD	535.9	538.1	519.7	526.5	531.2	542.8	549.6	554.3
LIFE INSURA CORP OF INDIA	393.2	393.6	386.6	389.1	391.1	395.7	398.2	400.2
LODHA DEVELOPERS LIMITED	868.1	862.5	830.0	839.0	853.5	877.1	886.1	900.6
LARSEN & TOUBRO LTD.	3862.0	3875.4	3785.6	3820.0	3841.0	3896.4	3930.8	3951.8
L&T FINANCE LIMITED	256.9	257.9	250.4	253.3	255.1	259.7	262.6	264.4
LTM LIMITED	3824.9	3850.4	3666.9	3736.6	3780.7	3894.5	3964.2	4008.3
LUPIN LIMITED	2273.3	2268.5	2211.2	2228.7	2251.0	2290.8	2308.3	2330.6
MAHINDRA & MAHINDRA LTD	3000.9	2971.2	2818.3	2859.4	2930.1	3041.9	3083.0	3153.7
MANAPPURAM FINANCE LTD	292.1	289.4	274.4	278.5	285.3	296.2	300.3	307.1
MANKIND PHARMA LIMITED	2372.7	2377.4	2287.3	2318.9	2345.8	2404.3	2435.9	2462.8
MARICO LIMITED	810.8	813.9	788.7	798.1	804.5	820.2	829.6	836.0
MARUTI SUZUKI INDIA LTD.	13098.0	13094.3	12722.7	12845.3	12971.7	13220.7	13343.3	13469.7

PIVOT REPORT NIFTY F&O

SYMBOL	LTP	PIVOT	SUP3	SUP2	SUP1	RES1	RES2	RES3
MAX HEALTHCARE INS LTD	1009.6	1010.8	985.5	994.3	1002.0	1018.5	1027.3	1035.0
MAZAGON DOCK SHIPBUIL LTD	2347.5	2347.6	2250.0	2282.6	2315.0	2380.0	2412.6	2445.0
MULTI COMMODITY EXCHANGE	2778.8	2761.2	2642.4	2676.1	2727.5	2812.6	2846.3	2897.7
MAX FINANCIAL SERV LTD	1562.1	1573.8	1492.4	1523.4	1542.8	1593.2	1624.2	1643.6
SAMVRDHNA MTHRSN INTL LTD	140.7	140.5	137.4	138.3	139.5	141.7	142.6	143.8
MOTILAL OSWAL FIN LTD	831.6	834.8	811.0	820.0	825.8	840.6	849.6	855.4
MPHISIS LIMITED	2277.8	2267.6	2187.2	2210.6	2244.2	2301.2	2324.6	2358.2
MUTHOOT FINANCE LIMITED	2890.0	2876.8	2740.5	2781.5	2835.8	2931.1	2972.1	3026.4
NIPPON L I A M LTD	1041.6	1046.9	1009.2	1023.5	1032.6	1056.0	1070.3	1079.4
NATIONAL ALUMINIUM CO LTD	370.6	373.8	350.2	359.2	364.9	379.5	388.5	394.2
INFO EDGE (I) LTD	963.8	961.3	929.8	939.4	951.6	973.5	983.1	995.3
NBCC (INDIA) LIMITED	100.5	101.3	94.3	96.9	98.7	103.1	105.7	107.5
NESTLE INDIA LIMITED	1422.5	1429.1	1388.2	1404.0	1413.3	1438.4	1454.2	1463.5
NHPC LTD	72.1	72.2	70.4	71.0	71.6	72.8	73.4	73.9
NMDC LTD.	88.5	88.3	86.1	86.8	87.6	89.2	89.8	90.7
NTPC LTD	351.9	351.3	344.8	346.8	349.3	353.9	355.9	358.4
NUVAMA WEALTH MANAGE LTD	1510.2	1515.5	1451.2	1474.4	1492.3	1533.4	1556.6	1574.5
FSN E COMMERCE VENTURES	260.3	261.0	254.5	256.9	258.6	262.7	265.1	266.8
OBEROI REALTY LIMITED	1582.7	1585.2	1549.8	1562.4	1572.6	1595.4	1608.0	1618.2
ORACLE FIN SERV SOFT LTD.	9265.5	9251.5	8675.0	8862.5	9064.0	9453.0	9640.5	9842.0
OIL INDIA LTD	429.4	431.2	412.5	419.3	424.3	436.2	443.0	448.0
OIL AND NATURAL GAS CORP.	252.6	253.1	243.2	246.6	249.6	256.1	259.5	262.5
PAGE INDUSTRIES LTD	37740.0	37901.7	36508.3	37026.7	37383.3	38258.3	38776.7	39133.3
PATANJALI FOODS LIMITED	419.1	418.8	404.3	409.0	414.1	423.8	428.5	433.6
ONE 97 COMMUNICATIONS LTD	1023.1	1033.4	954.5	984.2	1003.7	1052.9	1082.6	1102.1
PERSISTENT SYSTEMS LTD	4874.0	4846.2	4560.8	4646.7	4760.3	4959.8	5045.7	5159.3
PETRONET LNG LIMITED	263.1	264.0	253.5	257.3	260.2	266.9	270.7	273.6
POWER FIN CORP LTD.	413.6	418.7	390.0	401.3	407.4	424.8	436.1	442.2
PG ELECTROPLAST LTD	459.0	462.0	441.1	449.0	454.0	467.0	474.9	479.9
THE PHOENIX MILLS LTD	1732.8	1738.8	1683.8	1704.1	1718.5	1753.2	1773.5	1787.9
PIDILITE INDUSTRIES LTD	1498.8	1499.2	1470.9	1480.5	1489.6	1508.3	1517.9	1527.0
PI INDUSTRIES LTD	2801.2	2797.7	2728.2	2750.2	2775.7	2823.2	2845.2	2870.7
PUNJAB NATIONAL BANK	106.2	106.0	103.5	104.3	105.3	107.0	107.8	108.7
PNB HOUSING FIN LTD.	953.9	957.9	926.2	938.1	946.0	965.8	977.7	985.6
PB FINTECH LIMITED	1504.2	1508.8	1444.8	1467.7	1485.9	1527.0	1549.9	1568.1
POLYCAB INDIA LIMITED	9372.0	9416.5	9135.5	9244.0	9308.0	9480.5	9589.0	9653.0
POWER GRID CORP. LTD.	286.7	287.7	280.5	283.3	285.0	289.4	292.2	293.9
HITACHI ENERGY INDIA LTD	33250.0	33453.3	31716.7	32363.3	32806.7	33896.7	34543.3	34986.7
PREMIER ENERGIES LIMITED	1058.0	1060.1	1014.3	1030.3	1044.1	1073.9	1089.9	1103.7
PRESTIGE ESTATE LTD	1325.3	1324.1	1287.3	1299.2	1312.2	1337.1	1349.0	1362.0
RADICO KHAITAN LTD	3449.9	3454.2	3392.6	3414.6	3432.2	3471.8	3493.8	3511.4
RBL BANK LIMITED	359.1	359.4	338.9	345.8	352.5	366.1	373.0	379.7

PIVOT REPORT NIFTY F&O

SYMBOL	LTP	PIVOT	SUP3	SUP2	SUP1	RES1	RES2	RES3
REC LIMITED	336.9	340.7	318.0	326.9	331.9	345.7	354.6	359.6
RELIANCE INDUSTRIES LTD	1263.0	1264.1	1229.3	1241.3	1252.1	1274.9	1286.9	1297.7
RAIL VIKAS NIGAM LIMITED	222.2	223.6	214.7	218.1	220.2	225.6	229.0	231.0
STEEL AUTHORITY OF INDIA	181.4	181.0	174.7	176.7	179.0	183.4	185.4	187.7
SAMMAAN CAPITAL LIMITED	168.0	169.9	158.1	162.7	165.3	172.6	177.1	179.8
SBI CARDS & PAY SER LTD	568.3	570.9	549.3	557.4	562.8	576.4	584.5	589.9
SBI LIFE INSURANCE CO LTD	1719.1	1721.1	1666.4	1685.3	1702.2	1738.0	1756.9	1773.8
STATE BANK OF INDIA	1000.7	1001.0	976.3	984.6	992.7	1009.1	1017.4	1025.5
SHREE CEMENT LIMITED	23700.0	23680.0	23210.0	23360.0	23530.0	23850.0	24000.0	24170.0
SHRIRAM FINANCE LIMITED	886.3	887.2	860.9	870.0	878.1	895.3	904.4	912.5
SIEMENS LTD	3522.0	3536.3	3401.7	3451.3	3486.7	3571.7	3621.3	3656.7
SOLAR INDUSTRIES (I) LTD	17141.0	17405.3	15849.7	16456.3	16798.7	17747.7	18354.3	18696.7
SONA BLW PRECISION FRGS L	585.1	587.6	566.2	574.1	579.6	593.1	601.0	606.5
SRF LTD	2658.4	2680.8	2543.6	2596.8	2627.6	2711.6	2764.8	2795.6
SUN PHARMACEUTICAL IND L	1794.2	1792.6	1754.0	1766.3	1780.3	1806.6	1818.9	1832.9
SUPREME INDUSTRIES LTD	3443.8	3460.2	3336.0	3382.9	3413.3	3490.6	3537.5	3567.9
SUZLON ENERGY LIMITED	53.3	53.5	51.8	52.4	52.9	53.9	54.5	55.0
SWIGGY LIMITED	240.2	240.0	230.8	233.8	237.0	243.2	246.2	249.4
TATA CONSUMER PRODUCT LTD	1108.6	1110.9	1088.7	1096.9	1102.7	1116.7	1124.9	1130.7
TATA ELXSI LIMITED	4009.1	4023.4	3867.7	3924.4	3966.7	4065.7	4122.4	4164.7
TATA POWER CO LTD	390.3	391.7	378.7	383.5	386.9	395.1	399.9	403.3
TATA STEEL LIMITED	198.0	197.8	192.9	194.5	196.2	199.5	201.1	202.8
TATA CONSULTANCY SERV LT	2135.6	2133.4	2067.6	2088.8	2112.2	2156.8	2178.0	2201.4
TECH MAHINDRA LIMITED	1465.1	1461.6	1397.0	1417.4	1441.2	1485.4	1505.8	1529.6
TUBE INVEST OF INDIA LTD	2975.3	3004.0	2820.6	2891.3	2933.3	3046.0	3116.7	3158.7
TITAN COMPANY LIMITED	4025.2	4019.2	3861.9	3912.3	3968.8	4075.7	4126.1	4182.6
TATA MOTORS PASS VEH LTD	375.9	375.6	366.7	369.5	372.7	378.8	381.6	384.8
TORRENT PHARMACEUTICALS L	4572.2	4538.3	4284.6	4357.9	4465.0	4645.4	4718.7	4825.8
TRENT LTD	2710.9	2713.6	2607.3	2643.6	2677.3	2747.3	2783.6	2817.3
TVS MOTOR COMPANY LTD	3287.4	3300.0	3210.9	3244.8	3266.1	3321.3	3355.2	3376.5
ULTRATECH CEMENT LIMITED	10830.0	10824.7	10479.3	10592.7	10711.3	10943.3	11056.7	11175.3
UNION BANK OF INDIA	164.5	164.4	160.3	161.6	163.1	165.8	167.1	168.6
UNITED SPIRITS LIMITED	1257.8	1262.0	1225.2	1238.9	1248.3	1271.4	1285.1	1294.5
UNO MINDA LIMITED	1067.3	1065.9	1029.9	1041.4	1054.4	1078.9	1090.4	1103.4
UPL LIMITED	593.8	598.5	570.4	581.3	587.5	604.7	615.6	621.8
VARUN BEVERAGES LIMITED	519.9	523.6	501.0	509.8	514.8	528.6	537.4	542.4
VEDANTA LIMITED	304.9	302.6	277.9	285.4	295.1	312.3	319.8	329.5
VISHAL MEGA MART LIMITED	117.7	117.6	112.8	114.4	116.0	119.2	120.8	122.4
VOLTAS LTD	1277.3	1282.1	1242.2	1257.1	1267.2	1292.2	1307.1	1317.2
WAAREE ENERGIES LIMITED	3013.9	2998.4	2920.8	2941.5	2977.7	3034.6	3055.3	3091.5
WIPRO LTD	177.4	177.1	173.7	174.8	176.1	178.4	179.5	180.8
YES BANK LIMITED	22.2	22.4	21.4	21.8	22.0	22.6	23.0	23.2

PIVOT REPORT NIFTY F&O

SYMBOL	LTP	PIVOT	SUP3	SUP2	SUP1	RES1	RES2	RES3
ZYDUS LIFESCIENCES LTD	1105.9	1102.5	1075.4	1083.3	1094.6	1113.8	1121.7	1133.0

**TECHNICAL RESEARCH DESK**

Vikas Gupta	Technical Analyst	vikas.gupta@bpwealth.com
Bhavya Shah	Technical Analyst	bhavya.shah@bpwealth.com

TECHNICAL RESEARCH DESK**TEL: +91 22 61596131/36****INSTITUTIONAL SALES DESK****TEL: +91 22 61596403/04/05****DISCLAIMER APPENDIX****Analyst s holding in the Stock : Nil****Analyst s Certification:**

We analysts and the authors of this report, hereby certify that all of the views expressed in this research report accurately reflect our personal views about any and all of the subject issuer s or securities. We also certify that no part of our compensation was, is, or will be directly or indirectly related to the specific recommendation s or view s in this report. Analysts aren't registered as research analysts by FINRA and might not be an associated person of the BP Equities Pvt. Ltd. Institutional Equities.

General Disclaimer

This report has been prepared by the research department of BP EQUITIES Pvt. Ltd, is for information purposes only. This report is not construed as an offer to sell or the solicitation of an offer to buy or sell any security in any jurisdiction where such an offer or solicitation would be illegal.

BP EQUITIES Pvt. Ltd have exercised due diligence in checking the correctness and authenticity of the information contained herein, so far as it relates to current and historical information, but do not guarantee its accuracy or completeness. The opinions expressed are our current opinions as of the date appearing in the material and may be subject to change from time to time. Prospective investors are cautioned that any forward looking statement are not predictions and are subject to change without prior notice.

Recipients of this material should rely on their own investigations and take their own professional advice. BP EQUITIES Pvt. Ltd or any of its affiliates or employees shall not be in any way responsible for any loss or damage that may arise to any person from any inadvertent error in the information contained in this report. BP EQUITIES Pvt. Ltd. or any of its affiliates or employees do not provide, at any time, any express or implied warranty of any kind, regarding any matter pertaining to this report, including without limitation the implied warranties of merchantability, fitness for a particular purpose, and non-infringement. The recipients of this report should rely on their own investigations.

BP EQUITIES Pvt. Ltd and/or its affiliates and/or employees may have interests/ positions, financial or otherwise in the securities mentioned in this report. Opinions expressed are our current opinions as of the date appearing on this material only. While we endeavor to update on a reasonable basis the information discussed in this material, there may be regulatory, compliance, or other reasons that prevent us from doing so.

This report is not directed to or intended for display, downloading, printing, reproducing or for distribution to or use by any person in any locality, state and country or other jurisdiction where such distribution, publication or use would be contrary to the law or regulation or would subject to BP EQUITIES Pvt. Ltd or any of its affiliates to any registration or licensing requirement within such jurisdiction.

Corporate Office :

4th floor,
Rustom Bldg,
29, Veer Nariman Road, Fort, Mumbai-
400001

Phone- +91 22 6159 6464

Fax-+91 22 6159 6160

Website - www.bpwealth.com**Registered Office :**

24/26, 1st Floor, Cama Building,
Dalal street, Fort,

Mumbai-400001

BP Equities Pvt. Ltd.

CIN No: U67120MH1997PTC107392